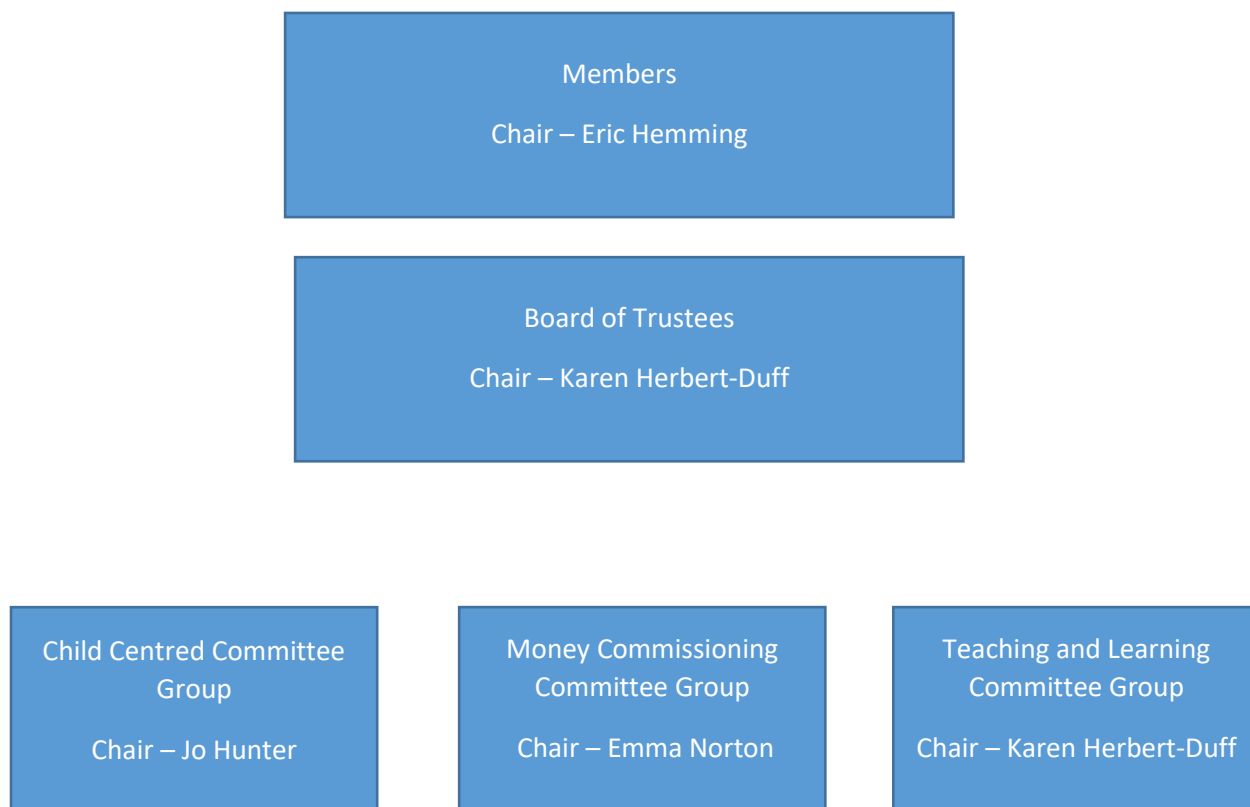


The Trust Structure, Remit and Committee groups



Members

The Members of the Lanesend Academy Trust are the guardians of the governance of the trust. They hold the Trust Board to account for the effective governance of the trust, but have a minimal role in the actual running of the trust. They appoint trustees and may also remove them if they conclude they are failing to carry out their core functions. Members sit at the top of the governance of the trust.

Board of Trustees

The Board of Trustees has three core functions:

1. Ensuring clarity of vision, ethos and strategic direction;
2. Holding the Head teacher to account for the educational performance of the school and its pupils, and the performance management of staff;
3. Overseeing the financial performance of the school and making sure that its money is well spent, including the pupil premium.

The Board of Trustees regularly meets as a full board but much of the groundwork for recommendations and decisions is carried out in smaller Committee Groups.

Committee Groups

Child-centred Group

The Child Centred Group particularly considers matters relating to:

- Safeguarding and Child Protection
- Equality and Inclusion
- Attendance
- Behaviour and Attitudes

Money and Commissioning Group

The Money Commissioning Group mainly focuses on:

- Finance and Budget setting
- Freedom of Information and Data Protection
- Health and Safety
- Security, Estate Management and Risk Assessment
- Staff employment and related matters
- Admissions

Teaching and Learning Group

The Teaching and Learning Group chiefly concentrates on:

- Parent/home/school matters
- Early Years Foundation Stage
- The Curriculum
- Quality of Teaching and Learning
- Assessment and Standards
- Personal Development

The Scheme of Management Delegation sets out the levels of decision making for the Trust within the above structure.