



LANESEND PRIMARY SCHOOL
LOVE LANE, COWES
ISLE OF WIGHT PO31 7ES
TEL & FAX: 01983 293 233
E: ADMIN@LANESENDPRI.IOW.SCH.UK
WWW.LANESENDPRIMARY.IK.ORG



Lanesend Primary School

Remarkable Children Policy

Signed: Date:
(Headteacher)

Signed: Date:
(Chair of Trustees)

Review Date: January 2022 (Every 3 Years)
Reviewed By: AEN, SENCO and Child-Centred
Group

Lanesend Primary
Remarkable Children Policy

CONTEXT

Why do we need a Remarkable Children Policy?

- ❖ Our School motto, 'Love Learning', obliges us to provide appropriate and extensive provision in order to meet the needs of all children to the best of our ability.
- ❖ We are an inclusive school who believe that every child deserves the opportunity to thrive in a particular skill, subject area or activity through our 'Rising Stars' (A+) provision and/or 'Remarkable Children' (A++) provision.
- ❖ In a growing school, the most effective provision for Remarkable Children and Rising Stars will only be achieved if it is deliberately sought.

AIMS

What do we want to achieve through better provision for 'Remarkable Children' and 'Rising Stars'?

- ❖ To provide all children with varied learning experiences and opportunities in order to successfully support the abilities, personal qualities and talents of all children.
- ❖ To provide Quality First Teaching and ensure learning at Lanesend Primary School is both challenging and enjoyable.
- ❖ To engage in a diverse identification process to ensure recognition of potential in a variety of activities, skills and subject areas
- ❖ To recognise and react to under-achievement among Remarkable Children and Rising Stars and to seek to remove it.
- ❖ To stimulate children through extra-curricular activities where possible.
- ❖ To audit provision half termly against appropriate standards.
- ❖ To compile a Remarkable Child Register, monitor progress and provide suitable provision for those identified with the current ability and/or potential to excel.

DEFINITIONS

What is a 'Remarkable Child' and 'Rising Star' at Lanesend Primary School?

The DCSF (Department for Children, Schools and Families) defines gifted children as "Children and young people with one or more abilities developed to a level significantly ahead of their year group (or with potential to develop those abilities)"

Lanesend Primary School identifies our 'Remarkable Children' in two categories. These categories are:

1. Academic Achievement:

- ❖ **'Rising Star'** – a child who is achieving within the A+ banding of FLiC points in a core academic subject e.g. Maths, Writing, Reading etc. These children will be provided with adequate provision in light of their abilities, in order to develop their potential.
- ❖ **'Remarkable Learner'** - a child who is achieving within the A++ banding of FLiC points in a core academic subject e.g. Maths, Writing, Reading etc. These children will be provided with adequate provision in light of their abilities, in order to develop their potential.

See Appendix 1 for FLiC bandings for each year group.

2. Non Academic Subject or interest:

- ❖ **'Remarkable Talent'** – a child who displays consistent exceptional qualities in a physical activity, creative/artistic talent, interpersonal skill or subject area. These children will be provided with adequate provision in light of their abilities.

What are the areas in which my child can be recognised as 'Remarkable' or a 'Rising Star'?

Children at Lanesend Primary School can be identified as 'Remarkable' or a 'Rising Star' in areas of a:

- a) **Physical ability** – either in games, athletics, dance, PE
- b) **Creative/artistic talent** – poetry, stories, imagination, drama, art/display, music
- c) **Interpersonal skill** – leadership, teamwork, public speaking, organisational skills
- d) **High intelligence** - maths, science, problem solving, thinking skills

We believe that staff should recognise potential in a child's progress, who are not registered as a 'Remarkable Learner', however has made additional progress in their learning. Lanesend Primary School identifies these children as a 'Rising Star'.

Lanesend Primary School is committed in supporting our 'Remarkable Children' and 'Rising Stars'. The Trustees are aware of these needs and there will be adequate provision within the budget for appropriate resources.

RECOGNITION

How are children identified for inclusion on the Remarkable Children register?

All children at Lanesend Primary School will be continually assessed and reviewed through the use of national tests and assessments throughout the school. In addition the following methods will be used:

- ❖ Staff to track child progress using the half termly data tracking systems. Staff to be aware of child progress in relation to the criteria for a 'Remarkable Learner' and/or 'Rising Star' and provide adequate support.
- ❖ Staff to evaluate the abilities and skills of children during clubs, physical activities, creative/artistic talent, interpersonal skills or a subject area using the evaluation sheet to feedback to Remarkable Children Coordinators. (see Appendix 2)
- ❖ The expertise of the Remarkable Children Co-ordinator's in supporting the judgement of the teacher
- ❖ FLiC Assessments to be completed and evaluated at each half termly assessment point.
- ❖ Family nomination through Child Progress Meetings etc

No one single method can be entirely accurate.

Lanesend Primary School will seek to provide an enriched curriculum for all children. Through this it will be possible to identify Remarkable Children and Rising Stars, before adequately supporting their abilities, talents and skills.

PROVISION AVAILABLE

What are the provisions available at Lanesend Primary School for Remarkable Children and Rising Stars?

Families will be informed of any extra provision in place for their child if they are identified as a 'Remarkable Child' or a 'Rising Star' (see Appendix 3). Lanesend Primary School aims to provide a diverse range of opportunities for these children.

Remarkable Learner:

- ❖ If appropriate, children to engage in more challenging reading, letters and sounds groups and other enrichment/intervention activities with mixed age groups, based on attainment levels. Staff to be mindful of differences in levels of maturity between year groups when mixing children.

- ❖ Children to engage in the 'Newchurch Gifted and Talented Children Programme' based on the skills and/or abilities identified for a particular child.
- ❖ Enrichment/extension work is provided by all teachers in all classes as part of normal differentiated provision, which is demonstrated on planning documents. Differentiation should provide activities requiring higher order thinking skills. The role of the teacher is vital in challenging the thinking of a 'Remarkable Learner'.
- ❖ Access to after school learning extension clubs based around core subject areas.
- ❖ Access to master classes with appropriate external agencies, professionals and volunteers to enrich the Remarkable Learner's view of a subject area. These may be organised by Lanesend Primary School, cluster schools or other agencies.
- ❖ Access to trips and competitions around core subject areas in order to enhance skills and abilities in core subjects and develop knowledge.

All children identified as a 'Rising Star' will have access to all provisions identified for a 'Remarkable Learner' based on teacher opinion.

Remarkable talent:

- ❖ Children to engage in the 'Newchurch Gifted and Talented Children Programme' based on the skills and/or abilities identified for a particular child.
- ❖ Enrichment/extension work is provided by all teachers in all classes as part of normal differentiated provision, which is demonstrated on planning documents. Differentiation should provide activities requiring higher order thinking skills. The role of the teacher is vital in challenging the thinking of a 'Remarkable Talent'.
- ❖ Access to afterschool learning extension clubs based around skills, abilities and subject areas.
- ❖ Access to master classes with appropriate external agencies, professionals and volunteers to enrich a 'Remarkable Talent'. These may be organised by Lanesend Primary School, cluster schools or other agencies.
- ❖ Families to be signposted to extra-curricular clubs, organisations and opportunities out of school hours in order to support and enrich their child's talent.
- ❖ Access to trips and competitions around abilities, skills and subject areas in order to enhance and/or develop existing talents.

CO-ORDINATING AND MONITORING

How are the 'Remarkable Children' and 'Rising Stars' monitored and evaluated at Lanesend Primary School?

'Remarkable Children' and 'Rising Stars' will be logged on SIMS (School Information Management System) and reviewed on a half termly basis by the Remarkable Children Coordinators and Progression Team Leads.

Identification will arise through the Survey of Need and analysis of FLiC banding. This will be reviewed by the Progression Team Leads and/or Head Teacher for classroom provision available for 'Remarkable Children' and 'Rising Stars', where appropriate.

The Lanesend Primary School Progression Team and/or Head Teacher will complete inspections of planning and child files to monitor the impact of provision for 'Remarkable Children' and 'Rising Stars'.

Staff responsible for Remarkable provisions will evaluate their impact through intervention feedback sheets completed annually (see Appendix 4), half termly attainment tracking on the Provision Map and if appropriate complete a child feedback form based on their experience of their provision (see Appendix 5). If provisions are not successful, staff will modify their current provision.

Families and teachers will work together for the needs of the 'Remarkable Child' and/or 'Rising Star'. This will be completed during Pupil Progress Meetings.

Lanesend Primary School will liaise with the local secondary schools to provide information on 'Remarkable Children' and seek support for Remarkable children needing in year provision, if appropriate.

SUPPORT

Where can Lanesend Primary School access support for 'Remarkable Children'?

The school is able to access support through the National Association for Gifted Children (NAGC).

THE NATIONAL ASSOCIATION FOR GIFTED CHILDREN (NAGC) has developed ten principles of good practice for schools. They are:

1. Flexibility in meeting needs
2. Valuing diversity, dealing with underachievement
3. A partnership with children and families
4. The leadership of the Headteacher and Senior Team
5. Regular observation and review with early and prompt intervention
6. High teacher expectations
7. Positive attitudes by teachers who are prepared to "Go the extra mile"
8. Close primary/secondary liaison
9. Good use of external resources
10. The absence of labels, working to the child's strengths.

Lanesend Primary School embraces these principles in order to deliver a successful and diverse provision for 'Remarkable Children' and 'Rising Stars'.

These organisations provide journals and courses, if appropriate.

Some children are themselves members of the above groups and attend activities associated with them.

There are books available relating to Remarkable Children at Lanesend Primary School.



LANESEND PRIMARY SCHOOL
 LOVE LANE, COWES
 ISLE OF WIGHT PO31 7ES
 TEL & FAX: 01983 293 233
 E: ADMIN@LANESENDPRI.IOW.SCH.UK
 WWW.LANESENDPRIMARY.IK.ORG

Remarkable Children – Identification Questionnaire



Please fill in this form following an activity, club or provision in place for a child who you feel displays 'Remarkable Qualities'. Please return to Chloe Johnson in the AEN Office.

Name of child:

Name of activity:

Date:

Please tick the 'Remarkable' qualities the child is presenting in this activity.

Remarkable quality		Narrative to support observations
General ability to excel in all areas of this activity		
Imagination or Design		
Teamwork skills		
Leadership skills		
Organisational Skills		
Planning and Evaluation		
Good physical dexterity or skill – specify		
High Intelligence in a specific subject area		
High level of problem solving skills		
Critical Thinker – can foresee possible scenarios		
High interest or talent in Art – please specify which area(s)		
High interest or talent in performing arts – please specify		
High interest or talent in a sporting activity – please specify		
High interest or talent in music – please specify		
Other – please specify		



DATE

To the Parent of _____,

RE: Remarkable Children Provision at Lanesend Primary School

At Lanesend Primary School we aim to provide the best provision for our Remarkable Children through challenging classwork, access to appropriate Master Classes based on their abilities and new opportunities in order to improve their existing skills. 'Remarkable' Children are making significant progress or displaying exceptional skills, compared to that expected for their chronological age in a subject area.

A child is identified as a 'Remarkable Learner' if they are working at 8 National Curriculum points above that expected for their chronological age in a core academic subject area, such as Maths, Writing or Reading. A child may be identified as having a 'Remarkable Talent' if they display consistent exceptional qualities in a physical activity, creative/artistic talent, interpersonal skill or subject area, compared to that of their peers.

A child may be identified as 'Remarkable' in four key areas. These are...

- Physical Ability – either in Games, P.E, Athletics or Dance
- Creative/Artistic Talent – Poetry, Stories, Imagination, Drama, Art/Display or Music
- Interpersonal Skill – Leadership, Teamwork, Public Speaking or Organisational Skills
- High Intelligence – Maths, Science, Problem Solving or Thinking Skills

We are delighted to inform you that your child has been identified as a _____ at Lanesend Primary School for their outstanding achievement in _____.

We are very impressed with your child's progress, attitude to learning and achievement. We feel the next steps for your child's learning and development are as follows:

1. INSERT NEXT STEPS HERE
2. INSERT NEXT STEPS HERE
3. INSERT NEXT STEPS HERE

Should you have any questions regarding the provision in place for your child in relation to 'Remarkable Children', please do not hesitate to contact us.

Many Thanks,

Chloe Johnson & Dave Cooper
Remarkable Children Coordinators



DATE

To the Parent of _____,

RE: Remarkable Children Provision at Lanesend Primary School

At Lanesend Primary School we aim to provide the best provision for our Rising Stars through challenging classwork, access to appropriate Master Classes based on their abilities and new opportunities in order to improve their existing skills. 'Rising Stars' are children making significant progress or displaying exceptional skills, compared to that expected for their chronological age in a subject area.

A child is identified as a 'Rising Star' if they are working at 6 National Curriculum points above that expected for their chronological age in a core academic subject area, such as Maths, Writing or Reading. 'Rising Stars' are displaying the potential to become 'Remarkable' students and will therefore be challenged through extension activities at school, to support them in reaching their full potential.

A child may be identified as a 'Rising Star' in two key areas. These are...

- Creative/Artistic Talent – Poetry, Stories, Imagination
- High Intelligence – Maths, Science, Problem Solving or Thinking Skills

We are delighted to inform you that your child has been identified as a 'Rising Star' at Lanesend Primary School for their outstanding achievement in _____.

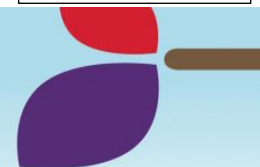
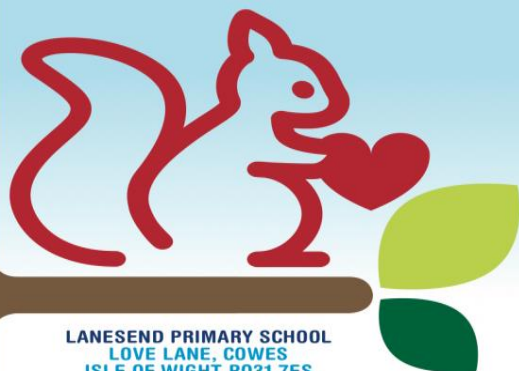
We are very impressed with your child's progress, attitude to learning and achievement. We feel your child has shown strong potential in this subject area, and therefore the next steps for your child's learning and development are as follows:

1. INSERT NEXT STEPS HERE
2. INSERT NEXT STEPS HERE
3. INSERT NEXT STEPS HERE

Should you have any questions regarding the provision in place for your child in relation to our 'Rising Stars', please do not hesitate to contact us.

Many Thanks,

Chloe Johnson & Dave Cooper
Remarkable Children Coordinators



LANESEND PRIMARY SCHOOL
LOVE LANE, COWES
ISLE OF WIGHT PO31 7ES
TEL & FAX: 01983 293 233
E: ADMIN@LANESENDPRI.IOW.SCH.UK
WWW.LANESENDPRIMARY.IK.ORG

INTERVENTION GROUP FEEDBACK

CHILD:

INTERVENTION GROUP:

START DATE:

END DATE:

TEACHER AND/OR LEARNING SUPPORT ASSISTANT FEEDBACK:
(Summary of child learning, progress and future recommendations)

CHILD FEEDBACK:
(What have I learnt and my next steps of learning)

Should you wish to discuss this feedback in more detail please do not hesitate to contact your child's classroom teacher or Learning Support Assistant.

Completed by:

Signature:

This document will be copied to: Parent(s)/carer(s)
School file – Chloe Johnson Additional Needs Assistant



Child voice – Remarkable Children 😊



LANESEND PRIMARY SCHOOL
LOVE LANE, GOWES
ISLE OF WIGHT PO31 7ES
TEL & FAX: 01983 293 233
E: ADMIN@LANESENDPRI.IOW.SCH.UK
WWW.LANESENDPRIMARY.IK.ORG

Name: _____ Date: _____

Please tell us which activity you took part in (Please Circle)

Master Class

Intervention Group

Club

Competition

Other

Please tell us a bit about the activity you took part in – what did you do?

Please tell us what you enjoyed the most about your activity and why?

What do you think could improve the activity you took part in?

Give your experience an overall rating! (Please Circle)

