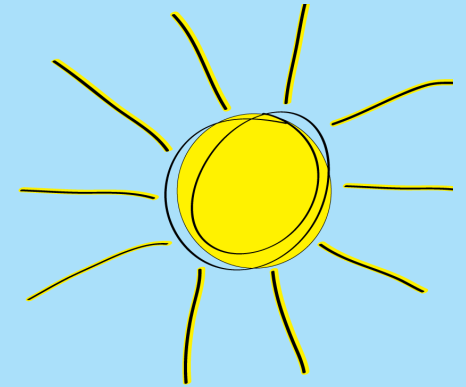




We have an open door policy...

Vicki Wallis	Vicki.Wallis@lanesendpri.iow.sch.uk	293233 ext 3
Chloe Johnson	Chloe.Johnson@lanesendpri.iow.sch.uk	293233 ext 3
Jessi Holmes	Jessi.Holmes@lanesendpri.iow.sch.uk	293233 ext 3
Nicola Napier	Nicola.Napier@lanesedpri.iow.sch.uk	293233 ext 3
Andrea Flux	Andrea.Flux@lanesendpri.iow.sch.uk	293233 ext
Hannah Holmes	Hannah.Holmes@lanesendpri.iow.sch.uk	293233 ext 4
Maddie Dyer	Maddie.Dyer@lanesenpri.iow.sch.uk	293233 ext 4

...or contact us via email or telephone!



Inclusion and Family Team

Who are we and what do we do?
2021 Edition



Inclusion Team

We support children with Additional Educational Needs (AEN) including emotional difficulties, diagnosed conditions and communication challenges. We believe everyone deserves to be happy and feel safe at school!



Nikki Napier
SENCO



Vicki Wallis
Inclusion Officer



Chloe Johnson
AEN Assistant



Jessi Holmes
AEN Assistant

What do we do?

- Support children to achieve and thrive within the school environment by providing specialist class based resources, intervention groups and emotional support
- Provide resources for emotional regulation, visuals, writing aids to name a few!
- Provide a nurturing approach to all pupils at Lanesend Primary School
- Support children with emotional needs such as anxiety, anger, ASC diagnosis etc
- Work with professionals including Health Visitors, Paediatrics, IOW Specialist provision in partnership with Medina House and the Autism Outreach Team.
- Support children who have a Remarkable Talent and/or a Remarkable Learner with extension activities, masterclasses, etc
- Provide extensive parent networking opportunities through Coffee Mornings, parent training, family events, drop in sessions, AEN Surgeries, parent networking.
- Share resources with families using an online website directory for families to access instant support including strategies, support groups and funding opportunities.



Family Support Team:

We recognise that children come with families, and their family is important to us too! We can help you with finances, parenting strategies, resources, school transport and have check ins with you.



Hannah Holmes
Safeguarding and Family Lead



Maddie Dyer
Family Team Assistant



Andrea Flux
Family Liaison Officer

What do we do?

- Provide positive additional support to families regarding housing, attendance, money, separated families and general family life.
- Support families who have Tier 2 review meetings, Early Help meetings or a plan in partnership with children's services for the Isle of Wight through regular catch ups and meetings
- Provide children with emotional support through check ins, pupil voice, wellbeing activities and a nurturing approach to all children
- Liaise with professionals for advice and information to best support a child and their family.
- Hold family coffee networking sessions with the local Reverend, Family Liaison Officer support, signposting to budgeting courses, etc
- Sibling support to build relationships between families and help in the home.
- Coordinate 'Lanesend Active Families' (LEAF) - an opportunity for families to become involved with running and organising school events such as discos, treasure hunts, summer fayres, BBQ's and movie nights.
- Coordinate time with our school therapy dog Daisy including check ins, reading sessions or tours around school to meet the children.

